

LUNCH MENU

Lunch served Monday-Saturday from 11am - 2pm

Summer Menu – May through October
Winter Menu – November through April

574.773.0214

SERVED DAILY:

Pulled Pork Sandwich	\$8.00
Pulled Pork Junior	\$6.00
Malcolm Special	\$9.00
Malcolm Junior	\$7.00
Egg/Ham/Chicken Salad Croissant	\$7.50
Cobb/Summer/Caesar Salad	\$6.50

Deli Salads + Special Sides (when available) may be added for \$2.50
Dessert Specials available as well.

Summer Menu

MONDAY

Chicken Breast Sandwich
w/ 1 side – \$8.00
1/3lb. Burger w/ 1 side – \$8.00
Add Bacon \$2

TUESDAY

Sweet-N-Tangy Chicken Sandwich
w/ 1 side – \$8.00
Brat w/ 1 side – \$7.00

WEDNESDAY

Smoked Pork Tenderloin
w/ 2 sides – \$9.00
Chicken Wings – \$8.99 lb.

THURSDAY

One Bacon Wrapped Chicken
w/ 2 sides – \$9.00
Brisket w/ 1 side – \$13.50

FRIDAY

Baby Back Ribs, 1/2 rack
w/ 1 side – \$14.00

SATURDAY

Chicken Wings – \$8.99 lb.
Brat w/ 1 side – \$7.00

Sides \$2.50

Winter Menu

MONDAY

Chicken Breast Sandwich w/ 1 side – \$8.00
Creamed Chicken over Biscuits – \$8.00

TUESDAY

Sweet-N-Tangy Chicken Sandwich
w/ 1 side – \$8.00
Meatloaf w/ 1 side – \$8.50

WEDNESDAY

Pork Tenderloin w/ 2 sides – \$9.00
Beef-N-Noodles over Mashed
Potatoes – \$8.50

THURSDAY

One Bacon Wrapped Chicken
w/ 2 sides – \$9.00
Brisket w/ 1 side – \$13.50

FRIDAY

Baby Back Ribs, 1/2 rack w/
1 side – \$14.00

SATURDAY

Chicken Wings – \$8.99 lb.
Brat w/ 1 side – \$7.00

Sides \$2.50

WE FOCUS ON YOUR EXPERIENCE

We cannot wait to serve you!



ABOUT CULINARY

Culinary Mill & Deli opened their doors on January 5th, 2012, originating in the historical building of Coppes Commons since day one. The owners, the Miller Family, had a desire to share their love of bringing people together with delicious food. Food is such an integral part of every day life; family gatherings + dinners, special events + weddings, celebrations, etc. as it is always an activity we look forward to; Let's make it an exceptional experience for every one!

Not only does Culinary desire to share this love of food, Culinary also have provided great job opportunities that will teach its employees life skills to further the community's positive experience. To be in a community such as this is a privilege, and they aim to treat everyone with kindness and respect.

What started as a simple mill + deli with a modest menu, Culinary has started to expand their offerings with more lunch options, such as Brisket, and even have offers for catering options for events, a full market, a meat + cheese deli, and even more market options such as take-n-bake pizzas.

CULINARY
MILL
Market & Deli

THINK GOODNESS

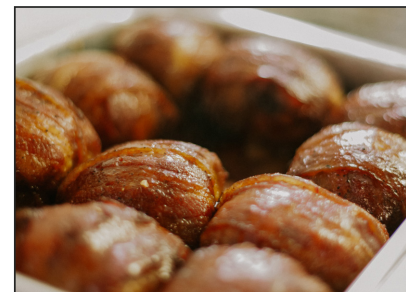
Located in Coppes Commons
401 E Market St Nappanee, IN

574.773.0214
culinarymill@gmail.com

401 E Market St Nappanee, IN
www.culinarymill.com



2026 CATERING MENU - CULINARY MILL MARKET & DELI



2025 CULINARY PARTY TRAYS

Party trays are a Culinary specialty, and are perfect for a party or gathering appetizer, baby shower, snacking plate, or even a business meeting. The options are endless with your choices of fillers, with go-to options such as meat + cheese trays! Choose from seasonal fruits, select in-house deli meat and cheese, and homemade dips.



16" Tray - \$65.00

Serves 50-60 people

12" Tray - \$50.00

Serves 25-30 people

PARTY TRAY OPTIONS*

- Meat + Cheese
- Veggie
- Fruit + Dip
- Fruit + Cheese
- Fruit + Veggie

*Other variations considered



MEATS -

More than #10, Pulled Pork	\$7.99 lb.	3-4 people per pound
Less than 10#, Pulled Pork	\$8.49 lb.	
Chicken Breast	\$5.00 ea.	
Chicken Wings	\$8.99 lb.	appx 8 wings per lb.
Bacon Wrapped Chicken Thighs	\$5.50 ea.	Figure 1.5 per person
Half Rack Baby Back Ribs	\$13.00 ea.	1 rack feeds 1-2 people
Pork Tenderloin Medallions	\$11.99 lb.	3-4 people per pound
Meatloaf	\$12.99 lb.	3-4 people per pound
Smoked Hamburger's	\$3.49 ea.	
Smoked Brats	\$3.49 ea.	
Roast Beef	\$14.99 lb.	3-4 people per pound
Glazed Ham	\$10.99 lb.	3-4 people per pound
Amish Wedding Chicken	\$11.49 lb.	3-4 people per pound
Chicken-N-Noodles	\$53/pan	25/30 people per pan
Beef-N-Noodles	\$53/pan	25/30 people per pan
Brisket	\$22.99 lb	3-4 people per pound
Chicken Alfredo	\$8.99 lb	
Cheese Stuffed Shells	\$8.99 lb	
Turkey (White and Dark)	\$12.99 lb	

SIDES - Half pans available

Creamy Potatoes	\$43/pan	25/30 people per pan
Baked Beans	\$43/pan	25/30 people per pan
Macaroni & Cheese	\$43/pan	25/30 people per pan
Homemade Noodles	\$43/pan	25/30 people per pan
Corn Spoon Bread	\$43/pan	25/30 people per pan
Garlic & Herb Red Potatoes	\$43/pan	25/30 people per pan
Peas & Carrots	\$43/pan	25/30 people per pan
Dressing	\$43/pan	25/30 people per pan
Green Beans	\$43/pan	25/30 people per pan
Corn	\$43/pan	25/30 people per pan
Sweet Potato Souffle'	\$43/pan	25/30 people per pan
Mashed Potatoes + Gravy	\$43/pan	25/30 people per pan

BREADS -

Garlic Cheese Buns	\$6.00 doz	
Hamburger Buns (8 pk)	\$4.29	
Brioche Buns	\$4.99	
Dinner Rolls (White + Wheat)	\$5.00 doz.	
Butterhorns (White)	\$5.00 doz	
Butter Pack	\$7.99 lb.	80 packs in a lb.

SALADS -

Potato Salad	\$4.99 lb.	5 people per pound
Broccoli Salad	\$6.99 lb.	5 people per pound
Coleslaw	\$3.99 lb	5 people per pound
Pasta Salad	\$5.99 lb.	5 people per pound
Macaroni Salad	\$4.99 lb.	5 people per pound
Grape Salad	\$6.99 lb.	5 people per pound
Summer Salad	\$40/pan	25 people per pan
Cobb Salad	\$40/pan	25 people per pan
Caesar Salad	\$40/pan	25 people per pan
Tossed Salad	\$40/pan	25 people per pan
Egg Salad	\$6.99 lb.	5 people per pound
Ham Salad	\$6.99 lb.	5 people per pound
Missy's Chicken Salad	\$9.99 lb.	5 people per pound
Regular Chicken Salad	\$8.99 lb.	5 people per pound

DESSERT -

Pie (Fruit or Cream)	\$15/pie	6 servings per pie
Pecan Pie	\$15/pie	6 servings per pie
Seasonal Fruit Pie	\$15/pie	6 servings per pie
Dirt Pudding	\$5.99 lb.	5 servings per pound
Cookies	\$7/doz.	
Pretzel Fluff	\$20/pan	10-12 people per pan

Prices are based off of current market prices and are subject to change at any time

574.773.0214
culinarymill@gmail.com